

## Reflection: The Founding of ChurchCare

The Master Builder, Jesus Christ, created the earth in a way that makes us reflect upon and worship Him. As a part of this creative activity, He made us in His image, so it is no surprise that His people build beautiful, effective things and have a dominion over them in a way that enhances their productivity. As I reflect upon Baptist Church Planters' subsidiary, ChurchCare, I see that same creativity and beauty furthering the Gospel.

Twenty years ago David Little tasked David Whipple with creating a subsidiary to take the lead on projects that would aid church planters in tasks that require time, risk, and energy but don't directly and immediately advance BCP's mission of assisting local churches in their Great Commission efforts. A wonderful synergy has developed between BCP and ChurchCare that provides both spiritual and practical help for local churches.

As BCP pursues its mission of strengthening a local church, churches are often introduced to ChurchCare. ChurchCare boosts BCP impact by offering practical help through maintaining or renovating church buildings for plants and revitalizations, through direct financial aid to the Mission, through grants and loans to church plants and revitalizations, or through closure assistance for a church God has not directed to be replanted or revitalized.

BCP and ChurchCare both have spiritual impact through counseling and intentional discipleship interactions with the church as they strive toward the church's growth. This synergy for God's glory reminds me of the partnership between the apostles and the servants in Acts 6 who together provided spiritual and practical help to the body. It is a beautiful picture of the partnerships that bring effect to Christ's statement, "I will build my Church." With this construct in mind, enjoy the different stories to follow that give names and color to ChurchCare's work done for the glory of God.

In gratitude and in Christ,



Jon Jenks  
**PRESIDENT**

STAY UP TO DATE

## connect

### Has Gone Digital!

To read it in its entirety and to make sure you don't miss future issues, please...



SCAN TO SIGN UP  
FOR UPDATES



SCAN TO GIVE

## What's new?

- Happy 20th Anniversary, ChurchCare!



**March 2004**  
ChurchCare is started, and David Whipple is named Executive Director.

**January 2005**  
ChurchCare appoints the first board members.

**October 2005**  
Berean Baptist Church Endwell, NY votes to dissolve.

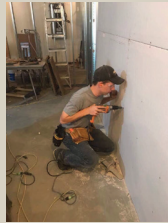
**January 2006**  
ChurchCare sells first closure property to a Russian Baptist Church.

**September 2006**  
3 grants to 3 separate churches are approved from the funds received from Berean.

**September 2010**  
ChurchCare Construction begins and accepts several builders from Baptist Missionary Builders.



**March 2017**  
ChurchCare Construction has its first short term interns for a Summer.



**December 2021**  
ChurchCare brings on Mark Henthorn to be interim director of construction.



**September 2022**  
Mark Henthorn accepted as ChurchCare's second executive director.

**March 2023**  
ChurchCare aids Plainfield Church Plant with a grant from the Revolving Loan fund.



**November 2023**  
ChurchCare has managed the closure of 39 churches in 13 different states.

**October 2023**  
ChurchCare Construction begins its 16th project.

Anniversaries are a valuable time to look back and see all that the Lord God has done in and through our lives and plan for the future with a goal of seeking our LORD's will and striving to be obedient for His glory.

On this 20th anniversary of ChurchCare, we renew our commitment to minister alongside BCP, through the power of the Holy Spirit, to churches requesting assistance in our three major areas of focus: closure counseling, revolving loan and grant fund, and construction support. This CONNECT highlights each of these three ministry areas so that we may rejoice together over a few of the many key milestones over the past twenty years.

Within the past year, ChurchCare has provided:

- Initial construction programming advice to design document reviews for 21 churches.
- Construction for churches in four states.
- Closure counseling to seven churches plus actual closure work for four churches.
- Five loans to assist church plants and planters.

This month, I have two requests for you as we look at how we will continue supporting local churches.

First, **continue to pray for ChurchCare** as we grow along with BCP. We do covet your prayers.

Second, I ask you to **"Come Build with Us!"** as a volunteer builder, if only for a week. You can find more information on being a volunteer builder at [churchcare.org/construction/come-build-with-us](https://churchcare.org/construction/come-build-with-us) or by using the following QR code to apply to join our other volunteers from across the USA.

*Mark Henthorn*  
Executive Director



**SCAN TO  
APPLY**

## Construction Team

Builder families enjoy lunch with executive director Mark Henthorn



Brent and Michele Howard



Jimmy and Abby Stevenson



Daniel and Ryanne Main  
administrative assistant



## Construction Ministry

After over 6 years of planning, Grace Baptist (Canton) commenced our major expansion project with the Church Care building team in April of 2022 (through August 2023). The updated facility has changed our capacity for ministry and church growth in so many ways! Lord willing, our church is looking forward to hosting the Ohio Baptist Regular Baptist Fellowship conference this coming October.



**ChurchCare**  
**CONSTRUCTION**

I have a testimony of thanks for the way the construction team and process impacted our church body and our perspective of our mission. It is so easy to become inwardly focused on your own opportunities, people, and issues as a church. God has used this construction project to challenge Grace Baptist to grow a more dependent spirit on God and our connection to the body of Christ.

The project began with the heart and servant mindset of the Howards and Stevensons, who quickly became a part of our church family. They involved our people in the work and prayer emphasis day after day on the project which impacted our folks as to what this project was about.

We grew in humility watching as supporters would sacrifice days to travel and work with us, and we made new friends. This stirred our group to consider how we could assist other churches in the future. There was also a spirit of cooperation and care on our job site as outside contractors allowed us to befriend them, share the Gospel, and have deeper Gospel conversations. The construction project has brought blessing to our church body and ministry.

Our expansion project has dramatically changed our facility footprint, but not as much as the project has stretched and taught us so much more about our Gospel mission!

*Dave Ryan, Pastor*



## Revolving Loan Fund

ChurchCare's Revolving Loan Fund assisted Emmanuel Baptist Church of Hamlin, NY financially in its earliest days, before they developed a credit history with commercial financial institutions. This assistance allowed us to build a beautiful place of worship for use in expanding the Gospel impact in our area.

"This was a great help to Emmanuel Baptist to get started and we thank ChurchCare very much for what they did for us."

*Richard Patrick, Founding Member/Deacon*



## Closure Assistance

I was the last Deacon in a church without a full-time pastor, a membership that had been reduced to a handful of members, and giving that was less than expenses (and had been for years). We were surviving on savings that God had been good enough to provide us, and some tough decisions had to be made.

We reached out to Tim Capon with IARBC to discuss our situation and look for guidance. After a lot of prayer and consideration, our church body decided to close our doors. This was the hardest thing I have ever had to do. It was easy to feel like we were failing the church founders, the church family, and mostly failing God.

Now how do you close a Church? We had no idea of what needed to be done or where to start. After we connected with Mark Henthorn at ChurchCare for some guidance and prayed for wisdom, we voted to use ChurchCare to help us close. Mark came, prayed with us, and walked us through closure and dissolution. He helped me to see that this was not the end of the church, but reminded me that God was in control and each member had a new opportunity to grow and serve God somewhere else.

We would have been lost without the guidance of ChurchCare, and I felt comfortable knowing they would do the will of the church. God is good!! There is now a Gospel preaching Baptist Church serving global Christians in the building we left behind, continuing God's mission from where we left off.

*Ron Dillavou, Deacon*